

vtech[®]

User's Manual

Lil' Critters Soothe & Surprise Light™



© 2013 VTech
Printed in China
91-002848-000 ^{US}

Dear Parent,

*Ever notice the look on your baby's face when they learn something new through their own discovery? These self-accomplished moments are a parent's greatest reward. To help fulfill them, VTech® created the **Infant Learning**® series of toys.*

*These unique interactive learning toys directly respond to what children do naturally – play! Using innovative technology, these toys react to baby's interactions, making each play experience fun and unique as they learn age-appropriate concepts like first words, numbers, shapes, colors and music. More importantly, VTech®'s **Infant Learning**® toys develop baby's mental and physical abilities by inspiring, engaging and teaching.*

At VTech®, we know that a child has the ability to do great things. That's why all of our electronic learning products are uniquely designed to develop a child's mind and allow them to learn to the best of their ability. We thank you for trusting VTech® with the important job of helping your child learn and grow!

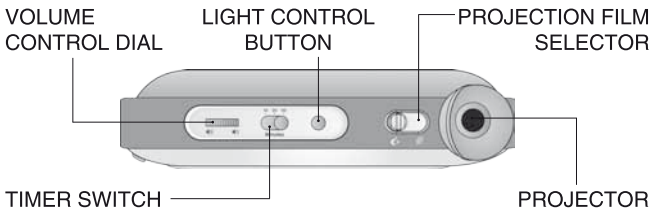
Sincerely,

Your friends at VTech®

*To learn more about the **Infant Learning**® series and other VTech® toys, visit www.vtechkids.com*

INTRODUCTION

Put your lil' critter to sleep with the **Lil' Critters Soothe & Surprise Light™** by **VTECH®**! Soothe and develop your baby's senses and encourage first words with this combination ceiling projector and musical crib light. Soft melodies and fun images will lull your baby to sleep, cascaded in music and soft light!



INCLUDED IN THIS PACKAGE

- One VTech® Lil' Critters Soothe & Surprise Light™
- 2 crib attachment straps
- One instruction manual

WARNING:

All packing materials, such as tape, plastic sheets, packaging locks and tags are not part of this toy, and should be discarded for your child's safety.

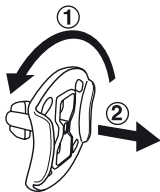
ATTENTION:

Pour la sécurité de votre enfant, débarrassez-vous de tous les produits d'emballage tels que rubans adhésifs, feuilles de plastique, attaches et étiquettes. Ils ne font pas partie du jouet.

NOTE:

Please keep this instruction manual as it contains important information.

Unlock the Packaging Locks:

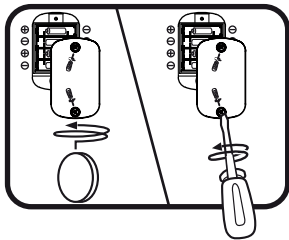


- ① Rotate the packaging locks 90 degrees counter-clockwise.
- ② Pull out the packaging locks.

INSTRUCTIONS

BATTERY INSTALLATION

1. Make sure the unit is turned **OFF**.
2. Locate the battery cover on the back of the unit. Use a coin or a screwdriver to loosen the screw.
3. Install 4 new 'AA' (AM-3/LR6) batteries following the diagram inside the battery box. (The use of new alkaline batteries is recommended for maximum performance.)
4. Replace the battery cover and tighten the screw to secure the battery cover.



BATTERY NOTICE

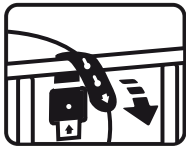
- Use new alkaline batteries for maximum performance.
- Use only batteries of the same or equivalent type as recommended.
- Do not mix different types of batteries: alkaline, standard (carbon-zinc) or rechargeable (Ni-Cd, Ni-MH), or new and used batteries.
- Do not use damaged batteries.
- Insert batteries with the correct polarity.
- Do not short-circuit the battery terminals.
- Remove exhausted batteries from the toy.
- Remove batteries during long periods of non-use.
- Do not dispose of batteries in fire.

- Do not charge non-rechargeable batteries.
- Remove rechargeable batteries from the toy before charging (if removable).
- Rechargeable batteries are only to be charged under adult supervision.

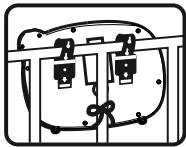
PRODUCT ASSEMBLY INSTRUCTIONS

With the **VTech® Lil' Critters Soothe & Surprise Light™** safety come first. To ensure your child's safety, adult assembly is required. Please follow the below instructions carefully and make sure the final assembly is correct. Attach only to cribs with sturdy rails and spindles. Do not attach to cribs with mesh walls.

1. Place the unit in the crib bringing both straps over the top rail. Slide the top of the strap under the slot on the back of the unit and secure. Repeat this procedure with the second strap. You can adjust the hanging height by choosing the appropriate hole on the top of each strap.



2. Fasten the cord on the back of the unit to the closest spindle.
3. Pull slightly on the unit to make sure both straps have been securely fastened. The unit should be snug against the crib rail. Please check the unit frequently to ensure it is still secure.

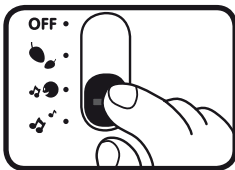


4. The unit can also be used outside of the crib as a floor toy. For your child's safety, please remove the crib attachment straps and store them in a safe location.

ACTIVITIES

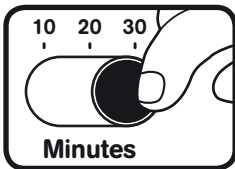
1. ON/OFF/MODE SELECTOR SWITCH

Slide the **ON/OFF/MODE SELECTOR SWITCH** to select the Nature Sounds Mode (🌿), Sing-Along Song Mode (🎤) or the Melody Mode (🎵).



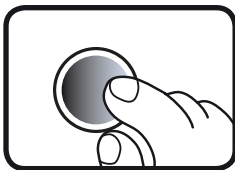
2. TIMER SWITCH

Slide the **TIMER SWITCH** to select the length of time the unit will play for. When the time is up the unit will automatically power-down.



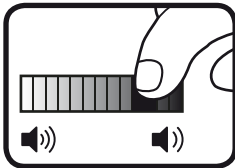
3. LIGHT CONTROL BUTTON

Press the **LIGHT CONTROL BUTTON** to select one of four light combinations. Press the button until you find the desired setting.



4. VOLUME CONTROL DIAL

Turn the **VOLUME CONTROL DIAL** to select the desired volume.



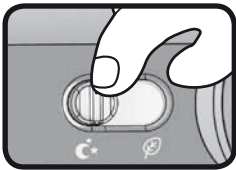
5. LEAF BUTTON

Press the **LEAF BUTTON** to play the next nature sound, sing-along song or melody depending on the selected mode.



6. PROJECTION FILM SELECTOR SWITCH

Slide the **PROJECTION FILM SELECTOR SWITCH** to change the image that is projected on the ceiling.



7. SOUND SENSOR

The **VTech® Lil' Critters Soothe & Surprise Light™** is equipped with a special sound sensor. Once the selected time setting has ended, the unit will automatically power-down. The sensor will reactivate the program when it detects baby's cry for approximately 4 seconds without interruption. The unit will reactivate according to the selected mode.

8. AUTOMATIC SHUT-OFF

To preserve battery life, the **VTech® Lil' Critters Soothe & Surprise Light™** will automatically power-down after the selected time. The unit can be turned on again by pressing the leaf button, sliding the mode selector switch or when the sound sensor detects baby's cry.

SONG LYRICS

SONG 1

The moon is out, the world is still.
It's time to get tucked in.
It's time to rest,
Sleep tight little one,
All through the night.

SONG 2

Twinkle, Twinkle, little star,
How I wonder what you are.

SONG 3

Ring around the rosy,
A pocket full of posies.
Hush-a, hush-a,
We all fall down.

SONG 4

Row, row, row, your boat,
Gently down the stream.

CARE & MAINTENANCE

1. Keep the unit clean by wiping it with a slightly damp cloth.
2. Keep the unit out of direct sunlight and away from any direct heat source.
3. Remove the batteries when the unit will not be in use for an extended period of time.
4. Do not drop the unit on hard surfaces and do not expose the unit to moisture or water.

TROUBLESHOOTING

If for some reason the program/activity stops working, please follow these steps:

1. Please turn the unit **OFF**.
2. Interrupt the power supply by removing the batteries.
3. Let the unit stand for a few minutes, then replace the batteries.
4. Turn the unit **ON**. The unit should now be ready to play again.
5. If the product still does not work, replace with an entire set of new batteries.

If the problem persists, please call our Consumer Services Department at 1-800-521-2010 in the U.S. or 1-877-352-8697 in Canada, and a service representative will be happy to help you.

For information on this product's warranty, please call **VTech**® at 1-800-521-2010 in the U.S. or 1-877-352-8697 in Canada.

IMPORTANT NOTE:

Creating and developing Infant Learning products is accompanied by a responsibility that we at **VTech**® take very seriously. We make every effort to ensure the accuracy of the information, which forms the value of our products. However, errors sometimes can occur. It is important for you to know that we stand behind our products and encourage you to call our Consumer Services Department at 1-800-521-2010 in the U.S. or 1-877-352-8697 in Canada, with any problems and/or suggestions that you might have. A service representative will be happy to help you.

NOTE:

This equipment has been tested and found to comply with the limits for a Class B digital device, pursuant to Part 15 of the FCC Rules. These limits are designed to provide reasonable protection against harmful interference in a residential installation. This equipment generates, uses and can radiate radio frequency energy and, if not installed and used in accordance with the instructions, may cause harmful interference to radio communications. However, there is no guarantee that interference will not occur in a particular installation. If this equipment does cause harmful interference to radio or television reception, which can be determined by turning the equipment off and on, the user is encouraged to try to correct the interference by one or more of the following measures:

- Reorient or relocate the receiving antenna
- Increase the separation between the equipment and receiver
- Connect the equipment into an outlet on a circuit different from that to which the receiver is connected
- Consult the dealer or an experienced radio/TV technician for help

CAUTION: Changes or modifications not expressly approved by the party responsible for compliance could void the user's authority to operate the equipment.

